



SPORTFLOW

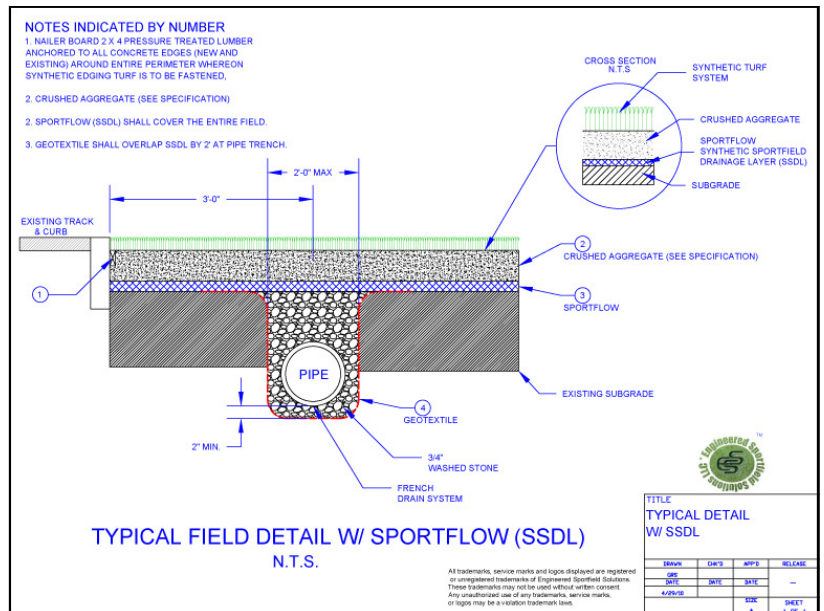
SportFlow is a triplanar geonet core with a geotextile laminated to one or both sides. Used in both synthetic and natural athletic fields, it is an effective drainage system that is placed under the entire base layer.

SportFlow has an extremely high permeability ($k \approx 65,000$ ft/day), with a flow rate equivalent to 12-inch untreated open-graded aggregate. Placed under the stabilizing aggregate layer, SportFlow will provide uniform and continual collection of infiltrating water, protecting your field from excessive saturation.

Not only does SportFlow ensure excellent drainage, it also reduces and simplifies your excavation, allowing for the elimination of up to twelve inches of soil removal and replacement. Unlike natural drainage stone, SportFlow has significant strength and creep resistance to enhance the strength of any sub-base layer.

Product Advantages:

- Quick removal of surface infiltration water with high permeability
- Economic alternative to unstable open graded aggregate
- Capillary break with void maintaining structure
- Geotextile separator to prevent the migration of fines
- Easy installation with less excavation and reduction on sub-grade strength



Meadowlands Stadium

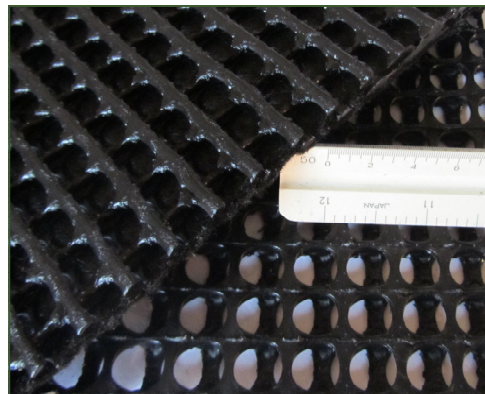


SportFlow was used in the construction of the new NFL Meadowlands Stadium in East Rutherford, NJ.

SPORTFLOW

The drainage geocomposite is comprised of a tri-axial geonet structure with thermally bonded non woven geotextile on one or both sides. The product is capable of providing high transmissivity in a soil environment under sustained normal loads typical on synthetic and natural fields and will have properties conforming to the values and test methods listed below:

PROPERTY	MEASURE	TEST METHODS	VALUES	
GEONET CORE			SportFlow	SportFlow HF
Tensile Strength - MD ¹		ASTM D 4595	500 lb/ft	400 lb/ft
Compressive Creep Behavior	RF @ 10000 hr @ 1000 psf	GRI- GC8	1.1	1.1
Thickness ²	MAV	ASTM D 5199	340 mil	325 mil
Density	MAV	ASTM D 1505	0.94 g/cm ³	0.94 g/cm ³
GEOTEXTILE³				
Grab Tensile	MARV	ASTM D 4632	160 lbs	160 lbs
Grab Elongation	MARV	ASTM D 4632	50	50
Permittivity	MARV	ASTM D 4491	1.1 Sec ⁻¹	1.1 Sec ⁻¹
GEOCOMPOSITE				
Dimensions	6.7' x 200' or 12.5' x 200'			
HYDRAULIC BEHAVIOR				
Transmissivity -MD ⁴ Gradient/Load	MAV	ASTM D 4716, Gradient .01 @ 1000psf	1.0*10 ⁻² m ² / sec	1.5*10 ⁻² m ² / sec
0.01			48 Gal/min/ft	72 Gal/min/ft



Drainage, Filtration, Protection



SEPTEMBER 2010

Distributed by:
Engineered Sportfield Solutions, LLC
 4223 Rock Run Road, Havre de Grace, MD 21078
 Phone: 410-878-6341 Fax: 410-734-4129

SportFlow is manufactured for ESS. The information contained herein has been accurately compiled by ESS and to the best of our knowledge accurately represents ESS product. Final determination of the suitability of any information or material for the use contemplated and its manner is the sole responsibility of the users.

www.engineered-sportfield.com